

Jonathan Hunt

ESTATE AGENCY

20 High Street Ware SG12 9BX

Tel: 01920 411090

8 High Street Buntingford SG9 9AG

Tel: 01763 272727

info@jonathan-hunt.co.uk

www.jonathanhunt.co.uk



20 Stewart Place, Ware, SG12 9UN

£259,950

JONATHAN HUNT are pleased to offer this SECOND FLOOR TWO BEDROOM APARTMENT featuring Bathroom and Ensuite to bedroom one. The property is located within a few minutes walk of Ware town centre and Station and is offered chain free

Buntingford Branch - Company No. 10303541 VAT No. 10303541

Ware Branch - Company No. 4759215 VAT No. 700174975

20 Stewart Place, Ware, SG12 9UN

LIVING ROOM 15'4" x 10'7" (4.69 x 3.24)



ENSUITE



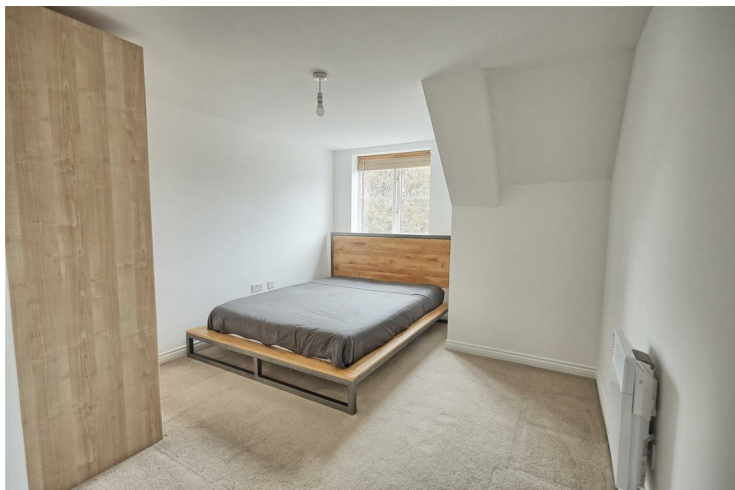
KITCHEN 9'0" x 6'2" (2.75 x 1.9)



BEDROOM TWO 9'7" x 7'11" (2.94 x 2.42)



BEDROOM ONE 12'1" x 10'5" (3.7 x 3.2)



BATHROOM



20 Stewart Place, Ware, SG12 9UN

UTILITY SPACE



LIFT ACCESS



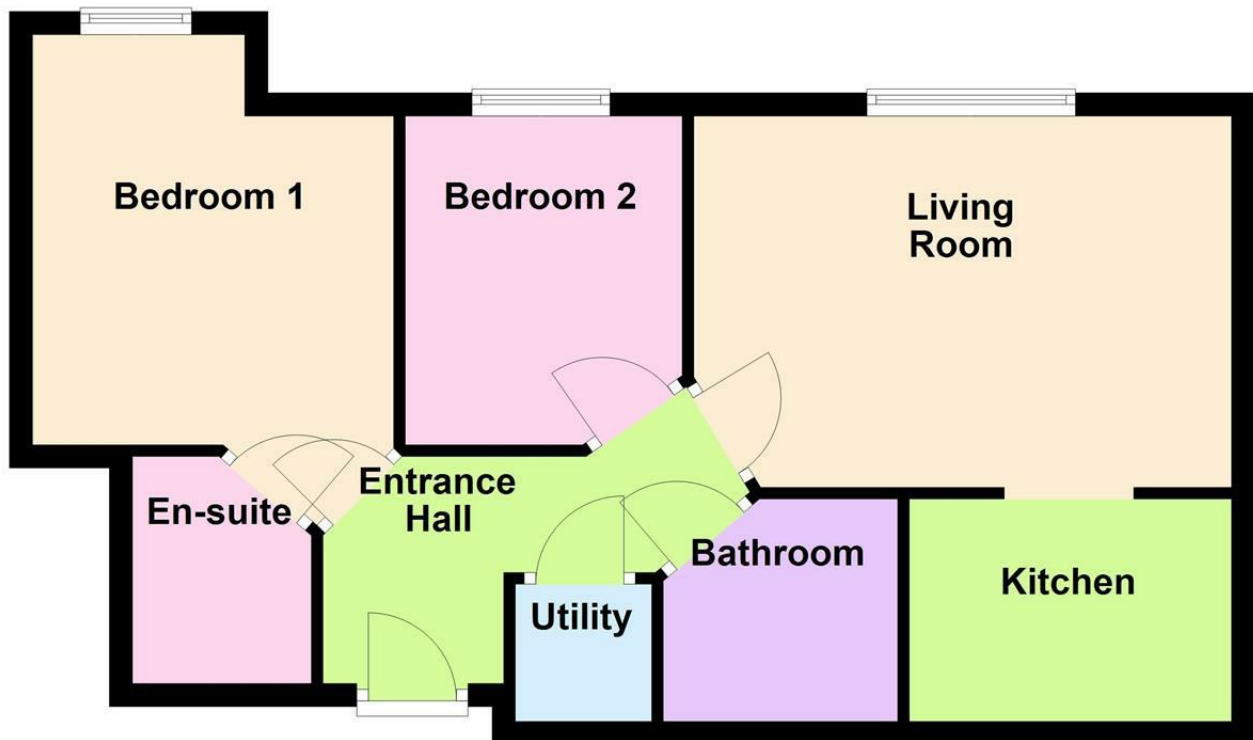
ALLOCATED PARKING



Energy Efficiency Rating		
	Current	Potential
Very energy efficient - lower running costs		
(92 plus) A		
(81-91) B		
(69-80) C		
(55-68) D		
(39-54) E		
(21-38) F		
(1-20) G		
Not energy efficient - higher running costs		
England & Wales	EU Directive 2002/91/EC	

Environmental Impact (CO ₂) Rating		
	Current	Potential
Very environmentally friendly - lower CO ₂ emissions		
(92 plus) A		
(81-91) B		
(69-80) C		
(55-68) D		
(39-54) E		
(21-38) F		
(1-20) G		
Not environmentally friendly - higher CO ₂ emissions		
England & Wales	EU Directive 2002/91/EC	

Approx. 52.4 sq. metres (564.5 sq. feet)



Total area: approx. 52.4 sq. metres (564.5 sq. feet)

Whilst every attempt has been made to ensure the accuracy of the floor plan contained here, measurements of doors, windows, rooms and any other item are approximate and no responsibility is taken for any error, omission, or misstatement. This plan is for illustrative purposes only and should only be used as such by any prospective purchaser.
Plan produced using PlanUp.